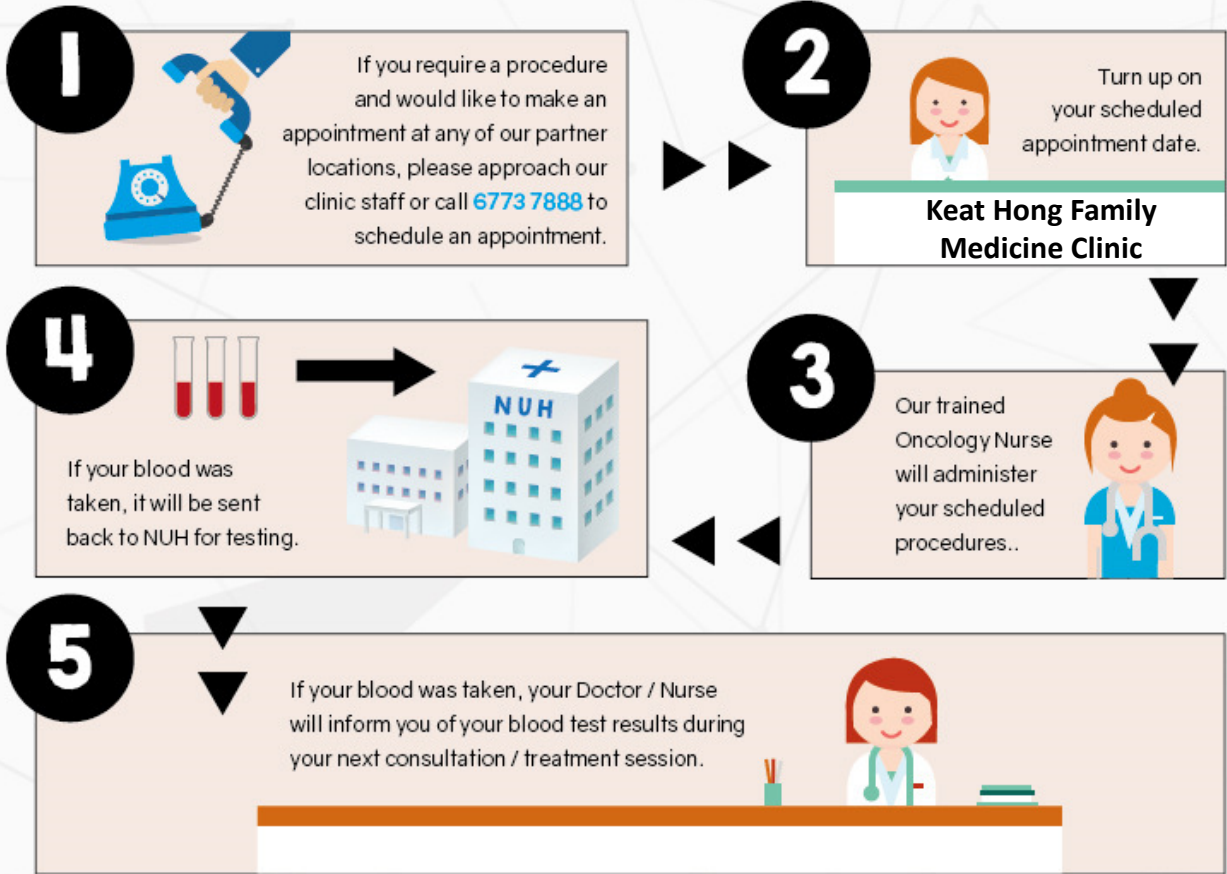
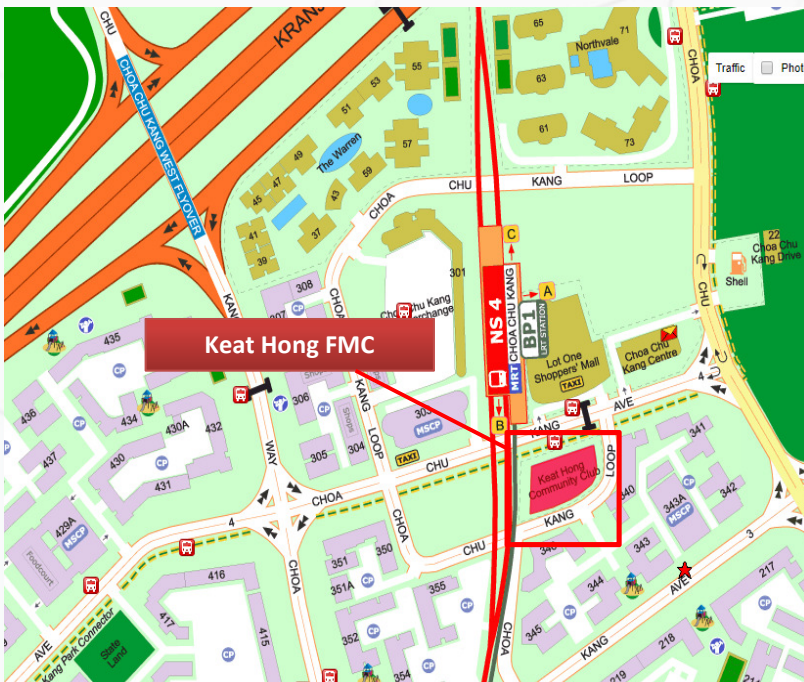


A STEP-BY-STEP GUIDE



DIRECTIONS TO KEAT HONG FAMILY MEDICINE CLINIC



Address -----

Keat Hong Community Club
2 Choa Chu Kang Loop, #03-02
Singapore 689687

Nearest MRT Station -----

NS4 Choa Chu Kang MRT Station
[3 minutes walk]

Bus Services -----

Bus Stop B44531:
307, 307T, 974, 974A, 975, 975B, 975C

Bus Stop B44539:
172, 190, 190A, 307, 307A, 974, 975,
985, 991, 991B